

THE BOTTLE FACTORY

**Event & Exhibition
Space Hire**

12 Ossory Road, SE1 5AN

Fabrix

51.517947 -0.134859

**Dedicated event and exhibition
space in a considerably restored
Victorian warehouse**

**Now home to a community of
makers, creatives and urban
industry businesses**

**Find us tucked away just
off the Old Kent Road, SE1**

Host with the most character

Welcome to The Bottle Factory.

A lovingly - and sustainably - restored Victorian warehouse, tucked away in its own cobbled courtyard just off the Old Kent Road in SE1, steeped in the area's long manufacturing history.

Originally home to world-famous J.Mills & Sons' lemonade, ginger beer and sparkling water factory, and built in 1895, this 32,500 sq ft landmark building boasts a rich mix of spaces, full of character and industrial heritage.

A growing creative and enterprising community, focused on making and doing good things, has made The Bottle Factory its home - from a twelfth-generation London-based gin distiller and a local ethical coffee roastery, through to independent producers, editors and designers.



Looking for a raw and characterful space for your next event, product launch, shoot or exhibition?





Ideal for photo shoots, filming, product launches, exhibitions, markets and any type of live event or reception.



The Event Space

The event space at The Bottle Factory is a striking, raw, industrial 3,450 sq ft space, available for dry hire.

Flooded with natural light, the event space is punctuated by distinctive slim green cast iron columns, with notable additional original features, including sliding, timber external doors and exposed concrete floors.

Offering up to 200 capacity, the event space opens out directly to the cobbled courtyard, allowing events to spill outside, as well as optional additional access to a professional kitchen and design-led gin bar located just across the courtyard in the adjoining Bottle House.

At a Glance

Wi-Fi

Toilets

Showers

Exposed concrete floors

Three-phased power

House ceiling lighting

Fully accessible

Direct access to cobbled external yard

4no large access sliding doors (W2.6 m x H3.2 m)

Drive-in loading

Professional kitchen available for optional additional hire

Gin bar designed by world-renowned, Leo Robitschek, available for optional additional hire

EPC A



Meet John

The event space at The Bottle Factory is managed by on-site community manager John Whelan. John is on hand to ensure the smooth running of your hire, from your initial enquiry, through the planning stages, to the day of your event and beyond.

John’s background in running live events and festivals, as well as a local theatre company, means he has first-hand understanding of your priorities and needs, and is always on standby to help.



We have worked with:



Past Events

Take a look back at the mix of memorable past events and recent bookings we've hosted. From location shoots, round tables, fashion shows and exhibitions to launch parties, anything is possible at The Bottle Factory.



Permanent Temporary

SUM and PEMPeople

Exhibition | Installation | Fashion Show | Screenings |
Music Performance

The headline event of the London Design Festival's Southwark South Design District took place at The Bottle Factory. The weekend-long showcases were a celebration of rich and resilient artistic and cultural talent across the Old Kent Road, Peckham and Camberwell areas.

An incredible mix of work from 100 local artists and designers was on show. With painting, sculpture, video art, VR interactive pieces, furniture and craft, attracting almost 2,000 people over the two-day showcase. The line-up, curated by local multi-disciplinary collective SUM, also featured film-screenings, workshops, spoken-word open mic sessions, a fashion show and live music from local artists.





Vessel

OHSB Projects
Art Exhibition

A contemporary art exhibition exploring the myriad of ways the vessel is considered and represented as a container: a symbol of society, a container of grief, joy or pain, and a representation of diversity.

Curated by nomadic art platform OHSB Projects, and inspired by the building’s heritage as a Victorian bottling factory, Vessel featured the work of 22 artists covering the expanded field of sculpture, glass and ceramic to installation.





Edelweiss Pianos Launch

Edelweiss
Product Launch | Press Event | Shoot

Edelweiss Pianos is a Cambridge-based family business, designing and manufacturing luxury, bespoke, custom handmade pianos.

The event space at The Bottle Factory was the perfect backdrop to showcase Edelweiss' latest collection, with a press launch and photo shoot.



Architecture Today Awards

Architecture Today Magazine
Awards Ceremony

The Architecture Today Awards recognise buildings that have stood the test of time and delivered for their occupiers - much like The Bottle Factory itself.

In keeping with the theme, this wasn't your average awards ceremony. Speeches were kept to a minimum and the focus was on giving the 200 guests - the great and the good of UK architecture - time to mingle over good food and drinks, with the reception spilling out into the cobbled courtyard. The incredible food was from famous local south Indian restaurant Ganapati.



Regenerative Architecture Index Launch



Architects Declare Launch Event

The launch event of the world's first Regenerative Architecture Index – a compendium of best practice in adopting future-proofed, sustainable and equitable practise across the built environment.

It was a jam-packed night. Special guest Brian Eno joined for a rare Q&A, trailblazing businesses were recognised as the 'Index front-runners', there was even a regenerative hat competition – as you do!

The Curious Case of Benjamin Button

GBA
Rehearsals

Leading West End production company, GBA, used The Bottle Factory for rehearsals of the award-winning musical, The Curious Case of Benjamin Button. The foot-stomping show was preparing for its move to the West End, after capturing hearts and selling out at Southwark Playhouse.

GBA is the production company behind some of the biggest and most extraordinary productions in the world. From Cabaret at the Kit Kat Club, to Matilda and Harry Potter & The Cursed Child.



Space UK Conference

Space+
Conference

The Space UK conference brought leaders from across the industry together for an afternoon of networking and round-table discussions at The Bottle Factory.

The space allowed for a dynamic conference structure. Attendees split into individual discussion groups focussed on a series of topics, followed by networking in the cobbled courtyard with food and drinks.

Bottle Factory Flea



Flea Market

An ongoing collaboration keeps future flea markets returning to The Bottle Factory to create a perfect South London destination for locals' seasonal shopping whether it's Christmas or summer holidays.

Peckham Carboot are behind this curated flea market which brings over 30 traders to The Bottle Factory along with food trucks and ice cream! Some of the best vintage homeware, furniture and designer clothing London has to offer for locals to shop and gander.





World-Class Event Bar & Kitchen Across the Cobbles



Twelfth-generation London-based gin distiller Thames Distillers are just a few steps away on the other side of the cobbled courtyard from the event space. Behind their doors is a stunning gin bar and professional kitchen alongside their distillery.

The 1,200 sq ft bar and 130 sq ft kitchen, designed by world-leading cocktail expert, Leo Robitschek, can be hired in addition to the event space for those looking for a more intimate space for a smaller event or private dinner.

Their professional kitchen can also be hired in conjunction with the event space where required.





Important Information

HIRE FEES:

Pricing on application. Hire of The Bottle Factory is exclusive of VAT, which will be added to your hire invoice.

INSURANCE:

You will be required to provide a valid Public Liability Insurance certificate when you hire our venues. If you do not have insurance, you can purchase this through all good comparison sites.

MARKETING:

We are happy to help with promoting your event on our website and social media. You will be provided with further information on this when your booking is confirmed.

TEMPORARY EVENTS NOTICE:

If you are selling alcohol for consumption on-site or off-site, we will need to apply for a Temporary Events Notice (TEN) from Southwark Council. You are not permitted to apply for a TEN yourself unless it has been discussed directly, and agreed in writing with the Community Manager.

ALCOHOL:

You are welcome to provide alcohol at your event following a discussion and written confirmation from The Bottle Factory. We can also signpost you to event companies who will be able to provide a bar service at your event. If you are setting up your own bar for public consumption (rather than just invited guests), you will need to provide us with a copy of the bar provider’s, or your own, Personal Alcohol License (PAL). Guests bringing their own alcohol is strictly prohibited.

EQUIPMENT FOR HIRE:

As a DRY HIRE venue, we provide the space and you will need to bring in the infrastructure which you require. We can put you in touch with event planning agencies or you can provide your own infrastructure.

AUDIO VISUAL & POWER:

We don’t provide any AV, but if you’d like to hire it for your event, we have preferred suppliers we can share. Music and amplified sound is permitted to be played inside the venue after consultation with, and written confirmation from, the Bottle Factory. There is a three-phase power supply available in the event space. Power outlets are highlighted on the floor plan.

WI-FI:

The venue has its own dedicated fast speed WIFI and the login and password will be shared on completion of contract.

SECURITY:

Any events serving alcohol, playing live or DJ music not solely for ambiance, or running beyond 19:30, are required to have the appropriate security present. We can provide you with preferred suppliers here or you can sort this out for your event.

INSTALLATIONS:

We are a heritage building so there are restrictions on where and how artwork and other equipment can be fixed within the space. Any plans must be discussed with and authorised by the Community Manager, including a site visit. At the end of your hire, all installations must be removed and the space made good (walls and surfaces refilled and painted).

SIGNAGE:

Any signage must be approved with the Community Manager.

VEHICLES AND PARKING:

The Bottle Factory is located off the main road with its own access courtyard. There is space on site for drive-in deliveries. There is limited parking on site which can be reserved subject to availability and agreement with the Community Manager.

CLEANING:

It is your responsibility to keep the venue clean throughout your hire and that the space is handed back as seen. If it is deemed that additional cleaning is required following your hire, this charge will be passed on to the hire.

TOILETS:

The event space has access to 3 toilets (one of which is accessible) and 4 showers.

WASTE:

All waste from your event will have to be disposed of responsibly off site — responsibility for this lies with the hire.

RECOMMENDED SUPPLIERS:

AV, staging and lighting:

Peachy Productions — Provide a complete support service for the Event and AV industry. This will include site visits, plans and visuals, quoting per event, installation and duty.
peachyproductions.com

Bar Hire Options:

HH&T — One of the UK’s leading drinks-focused brand activation agencies and creative consultancies, with a global network of brands, agencies and venues. They can design a bespoke drinks package for your event needs or your brand requirements here at The Bottle Factory.
headsheartsandtails.com

Little’s Liquor — Little’s Liquor is a family-run business with years of experience in the bar trade. We work closely with each client so that we can offer seamless high-end personalised bar services for both corporate events and weddings - and anything in between. We will work with you to create the perfect drinks menu for you and your guests to enjoy.
littlesliquor.com

Catering:

Room Service — London-based caterers with 10 years experience working with a stellar line up of brands and private clients, providing the full spectrum of food and event services for any occasion. From banquets, canapés, street food, shoot/location catering and everything in between, they champion food that is social, seasonal and sustainable, with a laidback indulgence.
getroomservice.co

Security:

We work with JK security who provide SIA registered security for all of your event needs.
jksecurityservices.co.uk

Heating:

Best at Hire - Situated in the biscuit factory and a local supplier.
bestathire.co.uk

Space Dressing:

We work with Palm Brokers for any type of event planned at the Bottle Factory needing greenery hire, props or set dressing.
palmbrokers.com

SE1 has grown into one of London's most creative neighbourhoods



The Bottle Factory is located between well-connected tube and rail stations, bus routes and cycle highways. We're located just off Old Kent Road with Peckham, Bermondsey, New Cross and Elephant & Castle all short hops away. You can catch a breath of fresh air in the nearby Burgess Park, just a 3-minute walk away.



Q1. Cycle Highway

Southbank > Greenwich Park



Q8. Cycle Highway

King's College Hospital > Burgess Park

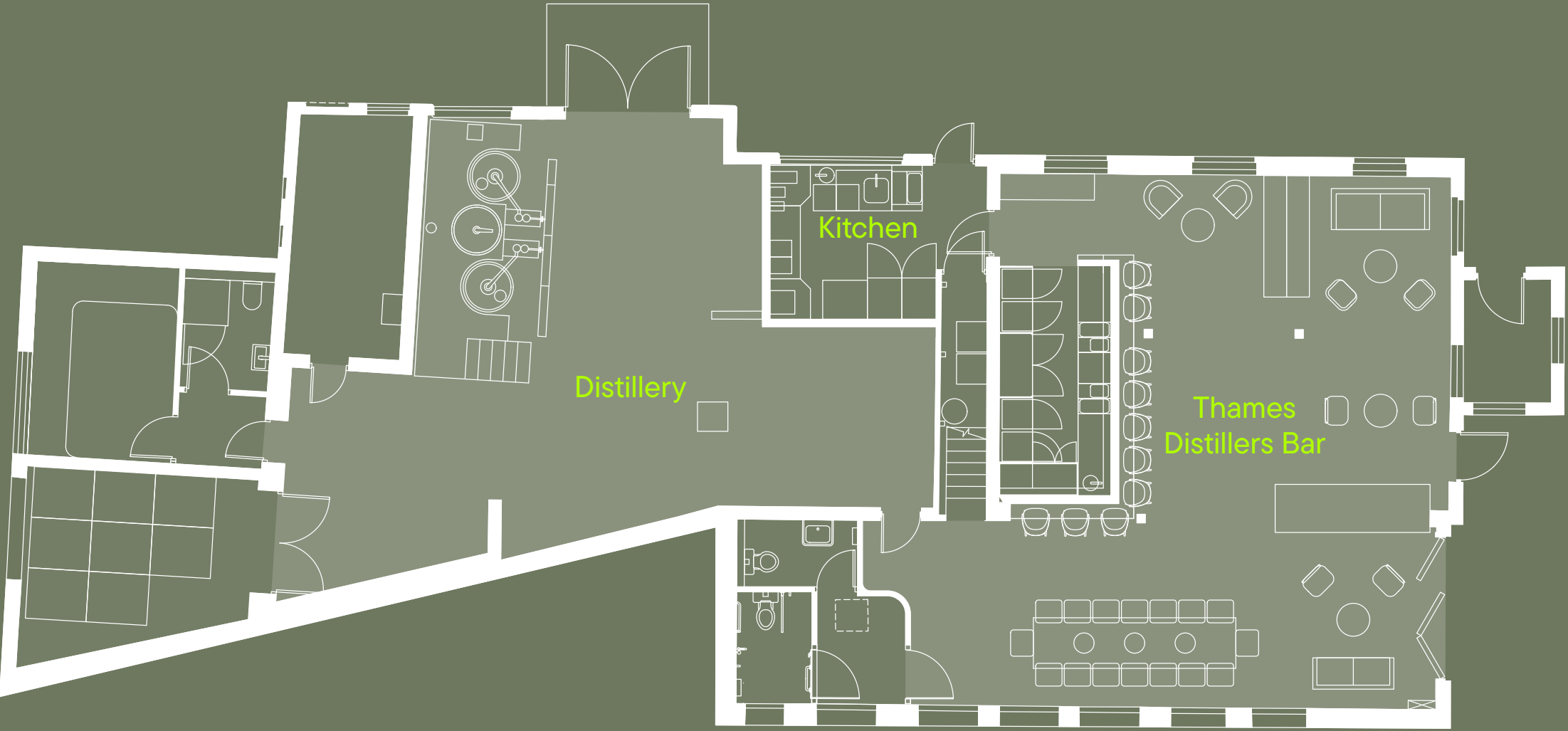
Q8. Cycle Highway

Burgess Park > Elephant & Castle > Q1 Interchange

The Bottle Factory



The Bottle House



Space Plans

THE BOTTLE FACTORY



Event Space

Fabrix

51.517947 -0.134859

Let's plan your next event:
studio@thebottlefactory.london

[@thebottlefactory](#)
thebottlefactory.london

